



2 Merino Gardens, London  
E1W

GARTON JONES.COM



## 2 Merino Gardens, London , E1W

GARTON JONES.COM

11 Park Street  
Chelsea Creek  
London  
SW6 2FS

Sales +44 (0) 20 7824 7090  
paul@gartonjones.com  
www.gartonjones.com

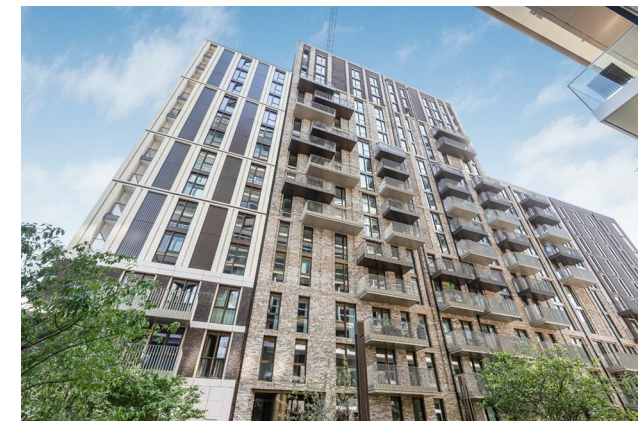
### £946 Per Week

Stunning Two-bedroom apartment located on the 6th floor of this building which forms part of the London Dock development by St George which is nestled in the heart of Wapping. The stunning apartment offers 861sqft (79.97sqm) of accommodation comprising of entrance hall, open plan modern living & kitchen area, access to a balcony, master bedroom with ensuite and built in wardrobe area, further second bedroom and a family bathroom. London Dock is a highly impressive modern development located 0.5 of a mil from Tower Hill tube and moments from iconic landmarks of Tower Bridge, the Tower of London, St Katherine's Docks. Residents have luxury amenities such as a private screening room, spa, gym, squash court, virtual golf and 24-hour concierge.

6 Weeks Security Deposit  
12 Month Tenancy  
Council Tax — Tower Hamlets, Band TBC

EPC — B (82)

- Brand New Two Bedroom Apartment
- 6th Floor With Lift
- 861sqft (79.97sqm)
- Furnished
- Highly Desirable Berkeley Homes Development
- 24 Hour Concierge
- Premium Residents facilities — Including Gym, Spa, Virtual Golf, Cinema and Residents Lounge
- 0.5m to Tower Hill Station
- Available 20th August 2025
- EPC — B (82)



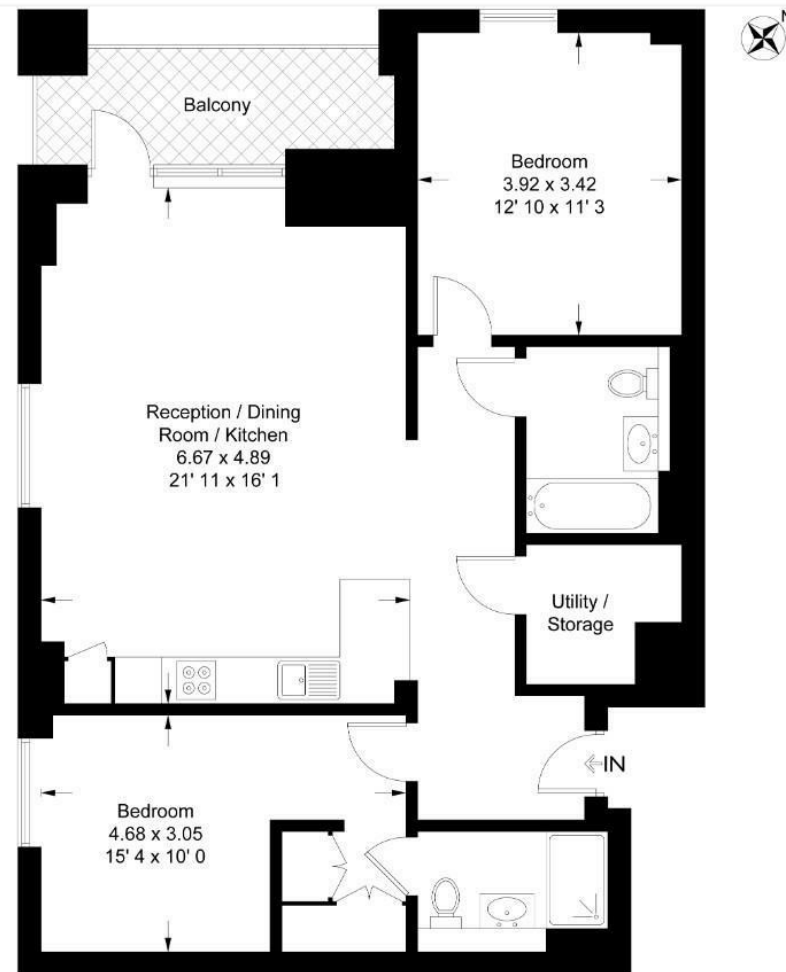
EPC certificate available on request.



**Merino Gardens**

Approximate Gross Internal Area = 916 sq ft / 85.1 sq m  
Balcony = 68 sq ft / 6.3 sq m

GARTON JONES  
LONDON



**Sixth Floor**

This plan is not to scale and must be used as layout guidance only. All measurements and areas are approximate and should not be relied upon to provide accurate information. This plan must not be relied upon when making property valuations, design considerations or any other such relevant decisions. We accept no responsibility or liability (whether in contract, tort or otherwise) in relation to any loss whatsoever arising from or in connection with any use of this plan or the adequacy, accuracy or completeness of it or any information within it.



